



**THE TOOLS TO MEET YOUR MANUFACTURING NEEDS**

**ANGLE HEADS**

**EQUIPPED WITH GROUND GEARS AND COLLET SHAFTS**



- Vernier scales help to orient the cutting tool location (0 - 360°).
- With our collet seat recessed into the body of the angle head, rigidity is optimized while maintaining a compact design.

- Our angle heads are assembled with high precision, P4 quality spindle bearings that are stabilized for high speeds up to 15,000 RPM and high torques up to 110 ft-lbs.

**SK COLLET CHUCKS**

**HOLDERS THAT ARE LEAN, TOUGH & EFFICIENT**

- Narrow body design accesses tight spots.
- Our steep 8° collet seats deeper in the body of the holder, providing 2x more gripping power than traditional 16° ER collets.

- Nikken guarantees a 3 micron runout tolerance for their “on size” fractional and metric size precision collets due to Nikken’s special heat treatment, grinding and custom slotting process.



**MILLING CHUCKS**

**THE MOST RELIABLE AND POWERFUL TOOLHOLDER**



- Symmetrical design—pre-balanced body and nut allow the milling chuck to operate beyond 20,000 RPM.

- Outside bearing nut mechanically induces tight taper of the milling chuck to evenly collapse onto the cutting shank for high precision T.I.R.

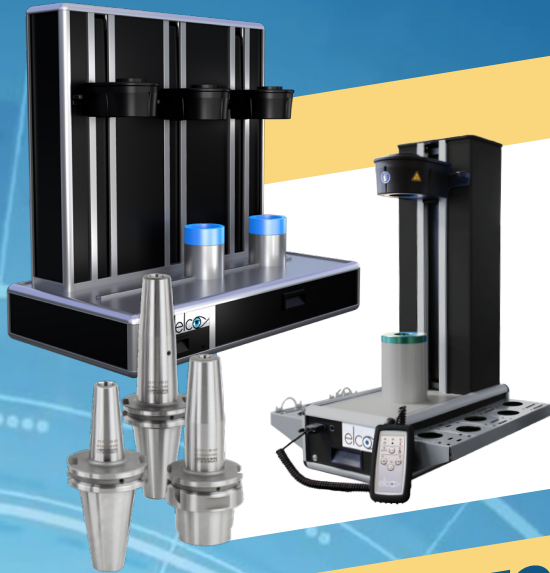
- 6 angled coolant slots are standard, providing high pressure and high volume of coolant directed toward the periphery of the cutting tool.



**THE TOOLS TO MEET YOUR MANUFACTURING NEEDS!**

**SHRINK FIT SYSTEMS**

**THE INDUSTRY'S HIGHEST QUALITY SHRINK FIT LINE**



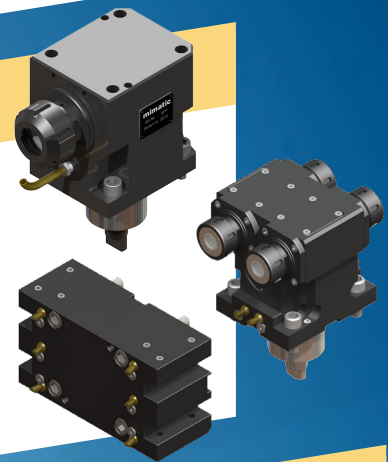
- Fastest shrinking time ranging from 2-7 seconds.
- Widest range available for a desktop unit 2-40mm (0.078" to 1.575").
- Can shrink most Cutting Tool materials from high speed steel to solid carbide.
- Special Shrink Fit machine and tool holder package available.

**LIVE & STATIC TOOLS**

**TURN YOUR LATHE INTO A MILLING MACHINE**

- We offer both Live and Static Tools for a multitude of machines.
- Dual radial and thrust bearing design for added rigidity.

- Live and Static tools offered in coolant through, adjustable, and multi-output.



**PRESETTERS**

**THERMAL STABILITY COUPLED WITH HIGH PRECISION**



- Precision ground granite is used for the base and column. This provides the utmost thermal stability for high repeatability and reproducibility during tool measuring and inspecting applications.
- Interchangeable spindles eliminate the need for adapters which can introduce additional errors.
- All units come with fifty of the most common post processors for today's CNC controls.